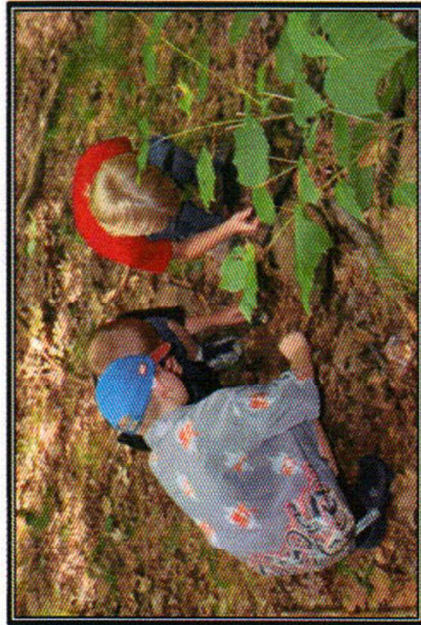


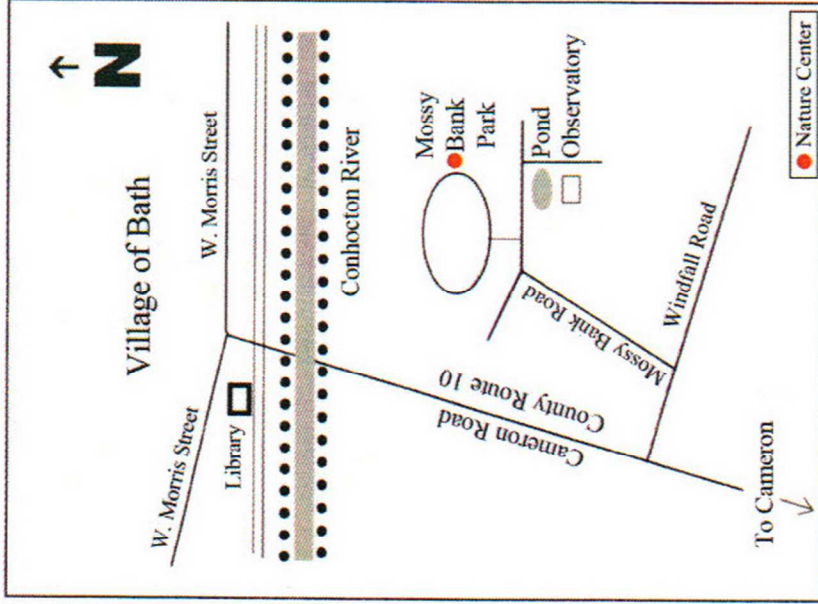
### THE BEST VIEW IN THE SOUTHERN TIER

The elevation of Mossy Bank, about 500 feet above the Conchocton River, offers excellent opportunities to study the geology of the area. Enjoy the scenic panoramic view from the overlook of the Village of Bath, the Conchocton River, Conchocton Valley, and Interstate 86/Rte 17.

### EXPLORE NATURE



The life and beauty of the park offer unlimited opportunities for literary and artistic expression. Study trees, wood lot management and the ecological systems that exist in the 167 acre hardwood and coniferous forest.



From Rte 86, exit 38, turn right at the first light, onto W. Morris St; go past Tops.  
 Stay right at the fork; go past the library.  
 Right on Cameron St.  
 Over Conchocton River  
 Continue about 1.6 mi.  
 Watch for small Mossy Bank Park signs.  
 Fork to the left onto Windfall Rd.  
 Go about .4 mi.  
 Left onto Mossy Bank Park Rd.  
 Go 1.3 mi. to gate, marked with a small sign.  
 Continue straight ahead until you pass between 2 large boulders into the park.

# Welcome

to



Home of the  
**Ted Markham Nature Center**

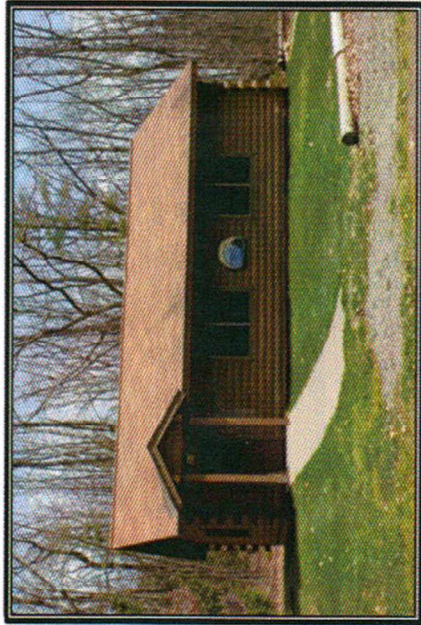
**Open May 1 – October 14**

**10:00am – 10:00pm**

[www.mossybankpark.com](http://www.mossybankpark.com)

## THE TED MARKHAM NATURE CENTER

The Nature Center is an educational feature of Mossy Bank Park. It is a heated log cabin classroom equipped with furniture, display case, projection screen and dry erase board. The center is utilized by nature groups and schools for the study of natural resources that exist in the park. The Nature Center was built with monetary contributions from students and interested people in Bath and the surrounding communities.



## WHO MAY USE THE NATURE CENTER?

The Nature Center is available to all responsible groups and classes of our surrounding schools to study the many natural resources available at Mossy Bank. All classes in the school systems ranging from K-12 will find something of interest to study and explore. Youth groups such as Steuben County Youth Bureau, FFA, and adult groups and civic clubs are also encouraged to use the facility for nature study. The Mossy Bank Park Committee also offers programs for the public on nature-related topics.

## HOW TO ARRANGE FOR YOUR GROUP TO

### USE THE PARK FACILITIES:

The Bath Village Clerk handles request forms, reservations, fees, and key.

- Call 607-776-3811, M-F, 9:00am-4:00pm
- Located in the Municipal Building/Police Station on Liberty Street, next to St. Thomas Episcopal Church

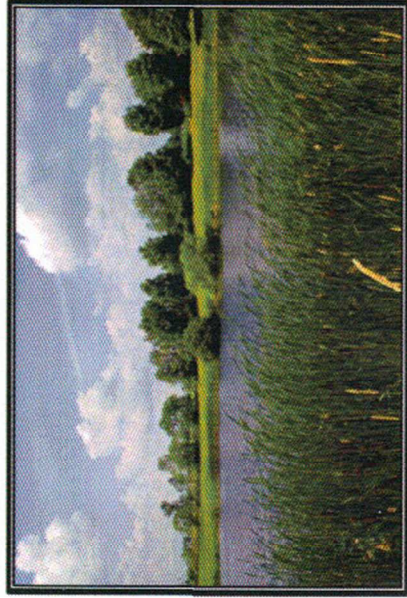
### Pavilions:

- fee required to reserve
- get "Reserved" sign from Village Clerk

### Nature Center:

- refundable deposit required
- use request form
- pick up key from Village Clerk

## MOSSY BANK PARK POND



The 5.22 acre pond provides opportunities to fish, as well as study pond life and aquatic ecosystems. A picnic pavilion, bathrooms, and playground are also available at the site.

## AMENITIES AVAILABLE AT

### MOSSY BANK PARK

- 167 acres of woods with several interpretive nature trails. Maps and self-guided trail brochures are available.
- The Nature Center for use by clubs, classes and organizations
- An incredible view of the Conchocton and Keuka Valleys and Village of Bath
- Picnic pavilions
- Children's play areas
- Physical fitness stations
- Public restrooms
- Pond site
- Observatory for sky watch, owned by Bath Central School, and open to public groups by prior arrangement
- An abundance of wildlife such as deer, birds, small mammals, and maybe...bears.
- Wild plants, flowers, and fungi to admire.
- Geology to study.
- Ecosystems to explore.
- Quiet places to meditate, contemplate, and just enjoy being out in nature.
- Natural beauty to photograph, paint, and write about.